



Architectural Louvre Products

tel: +44 (0) 1744 811866

sales@louvresol.com

fax: +44 (0) 1744 811661



St Helens Chamber of Commerce

Efficiency Within Chambers

Despite the downturn, St.Helens is a rapidly developing area in the North West of England, so it comes as no surprise that the supporting Chamber of Commerce has the largest membership in the UK.

The Chamber recently moved into their new purpose built offices and Neville Reyner, the President of the British Chambers of Commerce, officially opened the Chamber for business. The new three storey office complex fittingly overlooks the Sankey Canal

which was the first navigable canal constructed during industrial revolution in 1759.

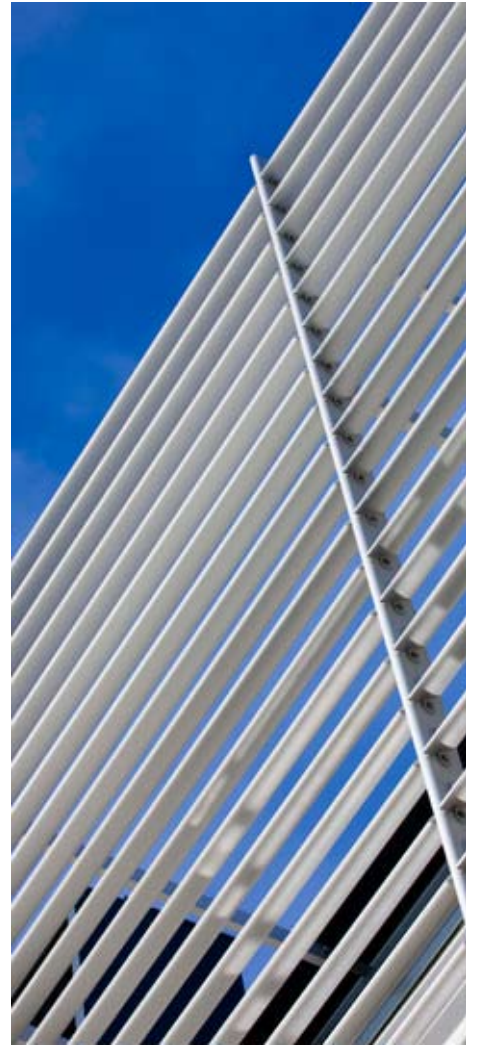
In order to shade the feature curtain wall on the Southern corner of the project, LouvreSol were appointed to provide an aluminium Brise Soliel structure which forms an 'L' shaped profile following the contour of the building. The structure was produced using LouvreSol's 'Lunar 200' airofoil installed on 'V1' vertical support arms. The self supporting structure was tied

back to the curtain wall system and the steel structure within the building.

The effect of the natural AA25 anodised finish to the brise soliel contrasts sharply with the dark grey framed curtain wall and window systems making a bold statement to visitors entering St Helens from the South.



St Helens Chamber of Commerce





The Point - Old Trafford Cricket Ground



LouvreSol gets 'The Point'

One of the premier sports venues in the UK, the Old Trafford Cricket Ground is being transformed into one of the most exciting events and conferences facilities in the North West.

'The Point' when complete in June 2010 will be one of the largest purpose built conference facilities in the UK. The completed venue will be able to accommodate up to 1000 for a formal dinner, and coupled with the existing conference facilities and hotel it will be one of the North West's premier venues to stage major exhibitions and events.

LouvreSol are providing some of

the longest aluminium louvre blades ever installed on a new build project. Running the length of the roof, some 57 metres, LouvreSol's products will shade the balcony overlooking the cricket ground and will keep solar heat gain under control. Coupled with 'rainwater harvesting', 'solar panels' and exceptional levels of insulation the Point is expected to be one of the greenest event facilities in the North West.

Mark Revel, LouvreSol Sales Director comments, "We are delighted to be associated with such a high profile facility in the North West, the project

has run according to plan and we've worked closely with the construction and design team in order to install the most efficient design both in terms of cost and running efficiency."

The project is designed by the Building Design Partnership in Manchester for the Lancashire County Cricket Club. The new venue is already taking bookings for 2010 and beyond.